

SMVT Polyclonal Antibody

Description

Product type	Primary Antibody
Code	BT-AP08416
Host	Rabbit
Isotype	IgG
Size	20ul, 50ul, 100ul
Immunogen	The antiserum was produced against synthesized peptide derived from human SLC5A6. AA range:551-600
Mol wt	68702
Species reactivity	Human
Clonality	Polyclonal
Recommended application	WB, ELISA
Concentration	1 mg/ml
Full name	SMVT Antibody
Synonyms	SLC5A6; SMVT; Sodium-dependent multivitamin transporter; Na(+)-dependent multivitamin transporter; Solute carrier family 5 member 6

This product is for research use only, not for use in human, therapeutic or diagnostic procedure.

Background

SLC5A6 (Solute Carrier Family 5 Member 6) is a Protein Coding gene. Diseases associated with SLC5A6 include thiamine metabolism dysfunction syndrome 2 and urinary tract obstruction. Among its related pathways are Vitamin digestion and absorption and Metabolism of water-soluble vitamins and cofactors. GO annotations related to this gene include transporter activity and sodium-dependent multivitamin transmembrane transporter activity. An important paralog of this gene is SLC5A10.

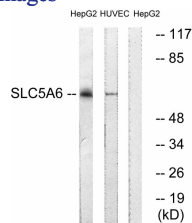
Recommended Dilution

WB: 1: 500 - 1: 2000

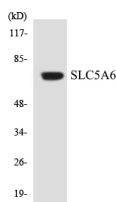
ELISA: 1: 10000

Not yet tested in other applications.

Images



Western blot analysis of lysates from HepG2 and HUVEC cells, using SLC5A6 Antibody. The lane on the right is blocked with the synthesized peptide.



Western blot analysis of the lysates from COLO205 cells using SLC5A6 antibody.

Storage

-20°C for one year

501 Changsheng S Rd, Nanhu Dist, Jiaxing, Zhejiang, China

Tel: 86 21 31007137 | E-mail: save@bt-laboratory.com | www.bt-laboratory.com