

SMYD2 Polyclonal Antibody

Description

Product type	Primary Antibody
Code	BT-AP08417
Host	Rabbit
Isotype	IgG
Size	20ul, 50ul, 100ul
Immunogen	The antiserum was produced against synthesized peptide derived from human SMYD2. AA range:99-148
Mol wt	49688
Species reactivity	Human, Mouse, Rat
Clonality	Polyclonal
Recommended application	WB, ELISA
Concentration	1 mg/ml
Full name	SMYD2 Antibody
Synonyms	SMYD2; KMT3C; N-lysine methyltransferase SMYD2; HSKM-B; Histone methyltransferase SMYD2; Lysine N-methyltransferase 3C; SET and MYND domain-containing protein 2

This product is for research use only, not for use in human, therapeutic or diagnostic procedure.

Background

SET domain-containing proteins, such as SMYD2, catalyze lysine methylation.

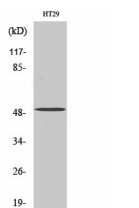
Recommended Dilution

WB: 1: 500 - 1: 2000

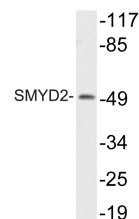
ELISA: 1: 10000

Not yet tested in other applications.

Images



Western Blot analysis of various cells using SMYD2 Polyclonal Antibody diluted at 1:2000



Western blot analysis of lysate from HT29 cells, using SMYD2 antibody.

Storage

-20°C for one year