

## DDT Polyclonal Antibody

### Description

Product type	Primary Antibody
Code	BT-AP08419
Host	Rabbit
Isotype	IgG
Size	20ul, 50ul, 100ul
Immunogen	Synthetic peptide from human protein at AA range: 50-90
Mol wt	N/A
Species reactivity	Human, Mouse, Rat
Clonality	Polyclonal
Recommended application	IHC-p, IF, ELISA
Concentration	1 mg/ml
Full name	D-dopachrome decarboxylase
Synonyms	D-dopachrome decarboxylase ;EC 4.1.1.84;D-dopachrome tautomerase;Phenylpyruvate tautomerase II; D-dopachrome decarboxylase; EC 4.1.1.84; D-dopachrome tautomerase; Phenylpyruvate tautomerase II

This product is for research use only, not for use in human, therapeutic or diagnostic procedure.

### Background

D-dopachrome tautomerase converts D-dopachrome into 5,6-dihydroxyindole. The DDT gene is related to the migration inhibitory factor (MIF) in terms of sequence, enzyme activity, and gene structure. DDT and MIF are closely linked on chromosome 22.

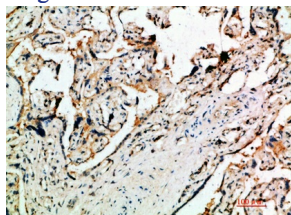
### Recommended Dilution

IHC-p: 1: 50 - 1: 200

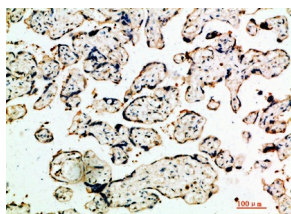
ELISA: 1: 10000 - 1: 20000

Not yet tested in other applications.

### Images



Immunohistochemical analysis of paraffin-embedded human-placenta, antibody was diluted at 1:200



Immunohistochemical analysis of paraffin-embedded human-placenta, antibody was diluted at 1:200

### Storage

-20°C for 1 year

