

SNAT2 Polyclonal Antibody

Description

Product type	Primary Antibody
Code	BT-AP08423
Host	Rabbit
Isotype	IgG
Size	20ul, 50ul, 100ul
Immunogen	The antiserum was produced against synthesized peptide derived from human SLC38A2. AA range:151-200
Mol wt	56026
Species reactivity	Human
Clonality	Polyclonal
Recommended application	WB, ELISA
Concentration	1 mg/ml
Full name	SNAT2 Antibody
Synonyms	SLC38A2; ATA2; KIAA1382; SAT2; SNAT2; Sodium-coupled neutral amino acid transporter 2; Amino acid transporter A2; Protein 40-9-1; Solute carrier family 38 member 2; System A amino acid transporter 2;

This product is for research use only, not for use in human, therapeutic or diagnostic procedure.

Background

SLC38A2 (Solute Carrier Family 38 Member 2) is a Protein Coding gene. Among its related pathways are Circadian entrainment and Protein digestion and absorption. GO annotations related to this gene include symporter activity and amino acid transmembrane transporter activity. An important paralog of this gene is SLC38A1.

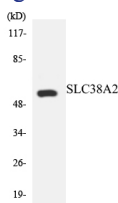
Recommended Dilution

WB: 1: 500 - 1: 2000

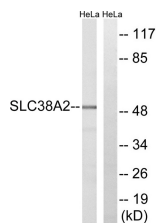
ELISA: 1: 40000

Not yet tested in other applications.

Images



Western blot analysis of the lysates from HeLa cells using SLC38A2 antibody.



Western blot analysis of lysates from HeLa cells, using SLC38A2 Antibody. The lane on the right is blocked with the synthesized peptide.

Storage

-20°C for one year

501 Changsheng S Rd, Nanhu Dist, Jiaxing, Zhejiang, China

Tel: 86 21 31007137 | E-mail: save@bt-laboratory.com | www.bt-laboratory.com