

SnoN Polyclonal Antibody

Description

Product type	Primary Antibody
Code	BT-AP08426
Host	Rabbit
Isotype	IgG
Size	20ul, 50ul, 100ul
Immunogen	The antiserum was produced against synthesized peptide derived from human SKIL. AA range:616-665
Mol wt	77004
Species reactivity	Human, Mouse
Clonality	Polyclonal
Recommended application	WB, IHC-p, ELISA
Concentration	1 mg/ml
Full name	SnoN Antibody
Synonyms	SKIL; SNO; Ski-like protein; Ski-related oncogene; Ski-related protein

This product is for research use only, not for use in human, therapeutic or diagnostic procedure.

Background

Ski-like protein encoded by SKIL is a component of the SMAD pathway, which regulates cell growth and differentiation through transforming growth factor-beta (TGFB). In the absence of ligand, the encoded protein binds to the promoter region of TGFB-responsive genes and recruits a nuclear repressor complex. TGFB signaling causes SMAD3 to enter the nucleus and degrade this protein, allowing these genes to be activated. Four transcript variants encoding three different isoforms have been found for this gene.

Recommended Dilution

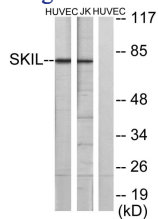
WB: 1: 500 - 1: 2000

IHC: 1: 100 - 1: 300

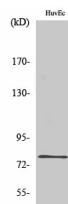
ELISA: 1: 40000

Not yet tested in other applications.

Images



Western blot analysis of lysates from HUVEC and Jurkat cells, using SKIL Antibody. The lane on the right is blocked with the synthesized peptide.



Western Blot analysis of various cells using SnoN Polyclonal Antibody diluted at 1:1000 cells nucleus.

Storage

-20°C for one year

501 Changsheng S Rd, Nanhu Dist, Jiaxing, Zhejiang, China

Tel: 86 21 31007137 | E-mail: save@bt-laboratory.com | www.bt-laboratory.com