

## CREL2 Rabbit Polyclonal Antibody

### Description

|                                |   |
|--------------------------------|---|
| <b>Product type</b>            | Primary Antibody                                    |
| <b>Code</b>                    | BT-AP08438  |
| <b>Host</b>                    | Rabbit  |
| <b>Isotype</b>                 | IgG   |
| <b>Size</b>                    | 20ul, 50ul, 100ul                                   |
| <b>Immunogen</b>               | Synthesized peptide derived from human CREL2        |
| <b>Mol wt</b>                  | N/A   |
| <b>Species reactivity</b>      | Human, Mouse, Rat                                   |
| <b>Clonality</b>               | Polyclonal  |
| <b>Recommended application</b> | WB  |
| <b>Concentration</b>           | 1 mg/ml   |
| <b>Full name</b>               | CREL2   |
| <b>Synonyms</b>                | CREL2; Cysteine-rich with EGF-like domain protein 2 |

This product is for research use only, not for use in human, therapeutic or diagnostic procedure.

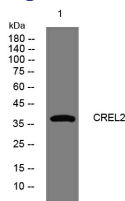
### Background

#### Recommended Dilution

WB: 1: 500 - 1: 2000

Not yet tested in other applications.

### Images



Western blot analysis of lysates from MCF-7 cells, primary antibody was diluted at 1:1000, 4°C overnight

### Storage

-20°C for 1 year

501 Changsheng S Rd, Nanhu Dist, Jiaxing, Zhejiang, China

Tel: 86 21 31007137 | E-mail: [save@bt-laboratory.com](mailto:save@bt-laboratory.com) | [www.bt-laboratory.com](http://www.bt-laboratory.com)