

DERL2 Polyclonal Antibody

Description

Product type	Primary Antibody
Code	BT-AP08450
Host	Rabbit
Isotype	IgG
Size	20ul, 50ul, 100ul
Immunogen	Synthesized peptide derived from part region of human protein
Mol wt	N/A
Species reactivity	Human, Mouse
Clonality	Polyclonal
Recommended application	WB, ELISA
Concentration	1 mg/ml
Full name	Derlin-2
Synonyms	Derlin-2 ;Degradation in endoplasmic reticulum protein 2;DERtrin-2;Der1-like protein 2;F-LAN-1;F-LANa

This product is for research use only, not for use in human, therapeutic or diagnostic procedure.

Background

Proteins that are unfolded or misfolded in the endoplasmic reticulum (ER) must be refolded or degraded to maintain the homeostasis of the ER. DERL2 is involved in the degradation of misfolded glycoproteins in the ER (Oda et al., 2006)

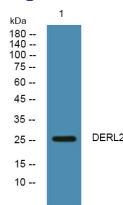
Recommended Dilution

WB: 1: 500 - 1: 2000

ELISA: 1: 5000 - 1: 20000

Not yet tested in other applications.

Images



Western blot analysis of lysates from K562 cells, primary antibody was diluted at 1:1000, 4°C overnight

Storage

-20°C for 1 year

501 Changsheng S Rd, Nanhu Dist, Jiaxing, Zhejiang, China

Tel: 86 21 31007137 | E-mail: save@bt-laboratory.com | www.bt-laboratory.com