

Desmin(Phospho Ser60) Polyclonal Antibody

Description

Product type	Primary Antibody
Code	BT-AP08452
Host	Rabbit
Isotype	IgG
Size	20ul, 50ul, 100ul
Immunogen	The antiserum was produced against synthesized peptide derived from human Desmin around the phosphorylation site of Ser60. AA range:26-75
Mol wt	53536
Species reactivity	Human, Mouse, Rat
Clonality	Polyclonal
Recommended application	IHC-p, IF, ELISA
Concentration	1 mg/ml
Full name	Desmin
Synonyms	Desmin; DES; Desmin

This product is for research use only, not for use in human, therapeutic or diagnostic procedure.

Background

This gene encodes a muscle-specific class III intermediate filament. Homopolymers of this protein form a stable intracytoplasmic filamentous network connecting myofibrils to each other and to the plasma membrane. Mutations in this gene are associated with desmin-related myopathy, a familial cardiac and skeletal myopathy (CSM), and with distal myopathies.

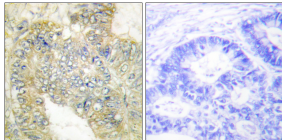
Recommended Dilution

IHC-p: 1: 100 - 1: 300

ELISA: 1: 20000

Not yet tested in other applications.

Images



Immunohistochemistry analysis of paraffin-embedded human colon carcinoma, using Desmin (Phospho-Ser60) Antibody. The picture on the right is blocked with the phospho peptide.

Storage

-20°C for 1 year