

## Somatostatin Polyclonal Antibody

### Description

<b>Product type</b>	Primary Antibody
<b>Code</b>	BT-AP08453
<b>Host</b>	Rabbit
<b>Isotype</b>	IgG
<b>Size</b>	20ul, 50ul, 100ul
<b>Immunogen</b>	The antiserum was produced against synthesized peptide derived from human Somatostatin. AA range:10-59
<b>Mol wt</b>	12736
<b>Species reactivity</b>	Human, Mouse, Rat
<b>Clonality</b>	Polyclonal
<b>Recommended application</b>	WB, IHC-p, ELISA
<b>Concentration</b>	1 mg/ml
<b>Full name</b>	Somatostatin Antibody
<b>Synonyms</b>	SST; Somatostatin; Growth hormone release-inhibiting factor

**This product is for research use only, not for use in human, therapeutic or diagnostic procedure.**

### Background

The hormone somatostatin has active 14 aa and 28 aa forms that are produced by alternate cleavage of the single preproprotein encoded by SST. Somatostatin is expressed throughout the body and inhibits the release of numerous secondary hormones by binding to high-affinity G-protein-coupled somatostatin receptors. This hormone is an important regulator of the endocrine system through its interactions with pituitary growth hormone, thyroid stimulating hormone, and most hormones of the gastrointestinal tract. Somatostatin also affects rates of neurotransmission in the central nervous system and proliferation of both normal and tumorigenic cells.

### Recommended Dilution

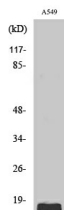
WB: 1: 500 - 1: 2000

IHC: 1: 100 - 1: 300

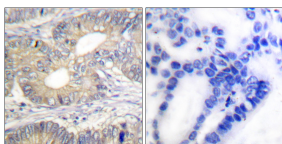
ELISA: 1: 5000

Not yet tested in other applications.

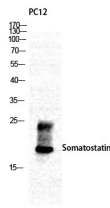
### Images



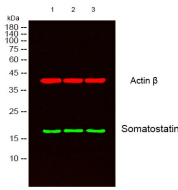
Western Blot analysis of A549 cells using Somatostatin Polyclonal Antibody



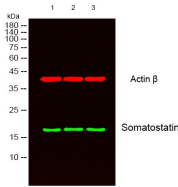
Immunohistochemistry analysis of paraffin-embedded human colon carcinoma tissue, using Somatostatin Antibody. The picture on the right is blocked with the synthesized peptide.



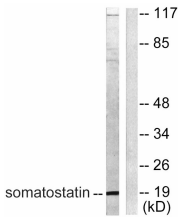
Western Blot analysis of various cells using Somatostatin Polyclonal Antibody



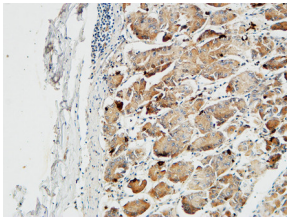
Western blot analysis of lysates from 1) PC-12, 2) A549, 3) HeLa cells, (Green) primary antibody was diluted at 1:1000, 4° over night, secondary antibody (cat:RS23920) was diluted at 1:10000, 37° 1 hour. (Red) Actin β Monoclonal Antibody (5B7) (cat:YM3028) antibody was diluted at 1:5000 as loading control, 4° over night, secondary antibody (cat:RS23710) was diluted at 1:10000, 37° 1 hour.



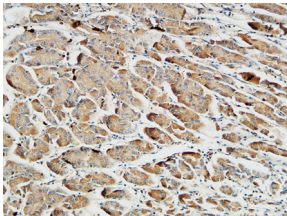
Western blot analysis of lysates from A549 cells, using Somatostatin Antibody. The lane on the right is blocked with the synthesized peptide.



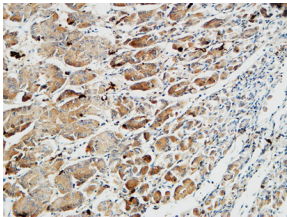
Immunohistochemical analysis of paraffin-embedded Human Gastric fundus. 1, Antibody was diluted at 1:200 (4° overnight). 2, High-pressure and temperature EDTA, pH8.0 was used for antigen retrieval. 3, Secondary antibody was diluted at 1:200 (room temperature, 30min).



Immunohistochemical analysis of paraffin-embedded Human Gastric fundus. 1, Antibody was diluted at 1:200 (4° overnight). 2, High-pressure and temperature EDTA, pH8.0 was used for antigen retrieval. 3, Secondary antibody was diluted at 1:200 (room temperature, 30min).



Immunohistochemical analysis of paraffin-embedded Human Gastric fundus. 1, Antibody was diluted at 1:200 (4° overnight). 2, High-pressure and temperature EDTA, pH8.0 was used for antigen retrieval. 3, Secondary antibody was diluted at 1:200 (room temperature, 30min).



### Storage

-20°C for one year