

Sos 2 Polyclonal Antibody

Description

Product type	Primary Antibody
Code	BT-AP08458
Host	Rabbit
Isotype	IgG
Size	20ul, 50ul, 100ul
Immunogen	The antiserum was produced against synthesized peptide derived from human SOS2. AA range:631-680
Mol wt	153031
Species reactivity	Human
Clonality	Polyclonal
Recommended application	WB, ELISA
Concentration	1 mg/ml
Full name	Sos 2 Antibody
Synonyms	SOS2; Son of sevenless homolog 2; SOS-2

This product is for research use only, not for use in human, therapeutic or diagnostic procedure.

Background

SOS2 (SOS Ras/Rho guanine nucleotide exchange factor 2) encodes a regulatory protein that is involved in the positive regulation of ras proteins. Mutations in SOS2 are associated with Noonan Syndrome-9.

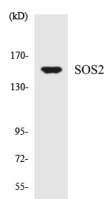
Recommended Dilution

WB: 1: 500 - 1: 2000

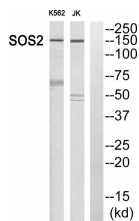
ELISA: 1: 10000

Not yet tested in other applications.

Images



Western blot analysis of the lysates from HT-29 cells using SOS2 antibody.



Western blot analysis of SOS2 Antibody. The lane on the right is blocked with the SOS2 peptide.

Storage

-20°C for one year