

CRNL1 Rabbit Polyclonal Antibody

Description

Product type	Primary Antibody
Code	BT-AP08461
Host	Rabbit
Isotype	IgG
Size	20ul, 50ul, 100ul
Immunogen	Synthesized peptide derived from human CRNL1
Mol wt	93280
Species reactivity	Human, Mouse, Rat
Clonality	Polyclonal
Recommended application	WB
Concentration	1 mg/ml
Full name	CRNL1
Synonyms	CRNL1

This product is for research use only, not for use in human, therapeutic or diagnostic procedure.

Background

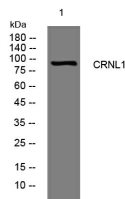
The crooked neck (cm) gene of *Drosophila* is essential for embryogenesis and is thought to be involved in cell cycle progression and pre-mRNA splicing. A protein encoded by this human locus has been found to localize to pre-mRNA splicing complexes in the nucleus and is necessary for pre-mRNA splicing. Alternatively spliced transcript variants have been described.

Recommended Dilution

WB: 1: 500 - 1: 2000

Not yet tested in other applications.

Images



Western blot analysis of lysates from A549 cells, primary antibody was diluted at 1:1000, 4°C overnight

Storage

-20°C for 1 year

501 Changsheng S Rd, Nanhu Dist, Jiaxing, Zhejiang, China

Tel: 86 21 31007137 | E-mail: save@bt-laboratory.com | www.bt-laboratory.com