

Sox-6 Polyclonal Antibody

Description

Product type	Primary Antibody
Code	BT-AP08469
Host	Rabbit
Isotype	IgG
Size	20ul, 50ul, 100ul
Immunogen	The antiserum was produced against synthesized peptide derived from human SOX6. AA range:10-59
Mol wt	91893
Species reactivity	Human, Mouse, Rat, Monkey
Clonality	Polyclonal
Recommended application	WB, IHC-p, ELISA
Concentration	1 mg/ml
Full name	Sox-6 Antibody
Synonyms	SOX6; Transcription factor SOX-6

This product is for research use only, not for use in human, therapeutic or diagnostic procedure.

Background

SOX6 (SRY-box 6) encodes a member of the D subfamily of sex determining region y-related transcription factors that are characterized by a conserved DNA-binding domain termed the high mobility group box and by their ability to bind the minor groove of DNA. The encoded protein is a transcriptional activator that is required for normal development of the central nervous system, chondrogenesis and maintenance of cardiac and skeletal muscle cells. The encoded protein interacts with other family members to cooperatively activate gene expression. Alternative splicing results in multiple transcript variants.

Recommended Dilution

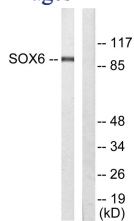
WB: 1: 500 - 1: 2000

IHC: 1: 100 - 1: 300

ELISA: 1: 5000

Not yet tested in other applications.

Images



Storage

-20°C for one year