

## Sox-8/9/17/18 Polyclonal Antibody

### Description

<b>Product type</b>	Primary Antibody
<b>Code</b>	BT-AP08471
<b>Host</b>	Rabbit
<b>Isotype</b>	IgG
<b>Size</b>	20ul, 50ul, 100ul
<b>Immunogen</b>	The antiserum was produced against synthesized peptide derived from human SOX8/9/17/18. AA range:116-165
<b>Mol wt</b>	47314/56137/44117/40891
<b>Species reactivity</b>	Human, Mouse, Monkey
<b>Clonality</b>	Polyclonal
<b>Recommended application</b>	WB, IHC-p, ELISA
<b>Concentration</b>	1 mg/ml
<b>Full name</b>	Sox-8/9/17/18 Antibody
<b>Synonyms</b>	SOX8; Transcription factor SOX-8; SOX9; Transcription factor SOX-9; SOX17; Transcription factor SOX-17; SOX18; Transcription factor SOX-18

**This product is for research use only, not for use in human, therapeutic or diagnostic procedure.**

### Background

SOX8 encodes a member of the SOX (SRY-related HMG-box) family of transcription factors involved in the regulation of embryonic development and in the determination of the cell fate. The transcription factor SOX-8 may act as a transcriptional activator after forming a protein complex with other proteins. This protein may be involved in brain development and function. Haploinsufficiency for this protein may contribute to the mental retardation found in haemoglobin H-related mental retardation (ART-16 syndrome).

### Recommended Dilution

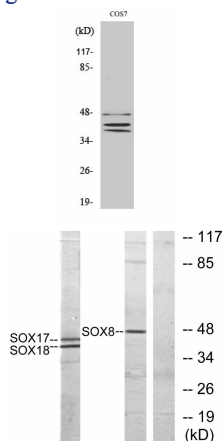
WB: 1: 500 - 1: 2000

IHC: 1: 100 - 1: 300

ELISA: 1: 10000

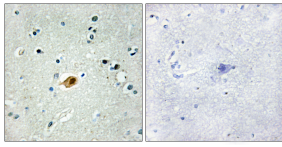
Not yet tested in other applications.

### Images

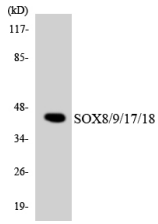


Western Blot analysis of various cells using Sox-8/9/17/18 Polyclonal Antibody cells nucleus.

Western blot analysis of lysates from COS7 cells, treated with serum 10% 30', using SOX8/9/17/18 Antibody. The lane on the right is blocked with the synthesized peptide.



Immunohistochemistry analysis of paraffin-embedded human brain tissue, using SOX8/9/17/18 Antibody. The picture on the right is blocked with the synthesized peptide.



Western blot analysis of the lysates from HeLa cells using SOX8/9/17/18 antibody.

### Storage

-20°C for one year

501 Changsheng S Rd, Nanhu Dist, Jiaxing, Zhejiang, China

Tel: 86 21 31007137 | E-mail: [save@bt-laboratory.com](mailto:save@bt-laboratory.com) | [www.bt-laboratory.com](http://www.bt-laboratory.com)