

Spectrin Beta II Polyclonal Antibody

Description

Product type	Primary Antibody
Code	BT-AP08499
Host	Rabbit
Isotype	IgG
Size	20ul, 50ul, 100ul
Immunogen	The antiserum was produced against synthesized peptide derived from human SPTBN1. AA range:651-700
Mol wt	274609
Species reactivity	Human, Mouse, Rat
Clonality	Polyclonal
Recommended application	WB, IHC-p, ELISA
Concentration	1 mg/ml
Full name	Spectrin beta II Antibody
Synonyms	SPTBN1; SPTB2; Spectrin beta chain; non-erythrocytic 1; Beta-II spectrin; Fodrin beta chain; Spectrin, non-erythroid beta chain 1

This product is for research use only, not for use in human, therapeutic or diagnostic procedure.

Background

Spectrin is an actin crosslinking and molecular scaffold protein that links the plasma membrane to the actin cytoskeleton, and functions in the determination of cell shape, arrangement of transmembrane proteins, and organization of organelles. It is composed of two antiparallel dimers of alpha- and beta- subunits. SPTBN1 (spectrin beta, non-erythrocytic 1) is one member of a family of beta-spectrin genes. The encoded protein contains an N-terminal actin-binding domain, and 17 spectrin repeats which are involved in dimer formation. Multiple transcript variants encoding different isoforms have been found for SPTBN1.

Recommended Dilution

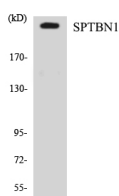
WB: 1: 500 - 1: 2000

IHC: 1: 100 - 1: 300

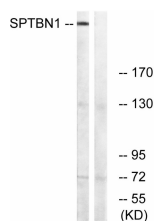
ELISA: 1: 10000

Not yet tested in other applications.

Images



Western blot analysis of the lysates from Jurkat cells using SPTBN1 antibody.



Western blot analysis of lysates from COLO cells, using SPTBN1 Antibody. The lane on the right is blocked with the synthesized peptide.

Storage

-20°C for one year

501 Changsheng S Rd, Nanhu Dist, Jiaxing, Zhejiang, China

Tel: 86 21 31007137 | E-mail: save@bt-laboratory.com | www.bt-laboratory.com