

Spectrin Beta V Polyclonal Antibody

Description

| | |
|--------------------------------|--|
| Product type | Primary Antibody |
| Code | BT-AP08500 |
| Host | Rabbit |
| Isotype | IgG |
| Size | 20ul, 50ul, 100ul |
| Immunogen | The antiserum was produced against synthesized peptide derived from human SPTBN5. AA range:481-530 |
| Mol wt | 416835 |
| Species reactivity | Human |
| Clonality | Polyclonal |
| Recommended application | IHC-p, ELISA |
| Concentration | 1 mg/ml |
| Full name | Spectrin beta V Antibody |
| Synonyms | SPTBN5; BSPECV; HUBSPECV; HUSPECV; Spectrin beta chain; non-erythrocytic 5; Beta-V spectrin |

This product is for research use only, not for use in human, therapeutic or diagnostic procedure.

Background

SPTBN5 (Spectrin Beta, Non-Erythrocytic 5) is a Protein Coding gene. Among its related pathways are Sertoli-Sertoli Cell Junction Dynamics and Interleukin-3, 5 and GM-CSF signaling. GO annotations related to this gene include actin binding and kinesin binding. An important paralog of this gene is SYNE2.

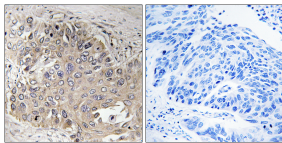
Recommended Dilution

IHC: 1: 100 - 1: 300

ELISA: 1: 40000

Not yet tested in other applications.

Images



Immunohistochemistry analysis of paraffin-embedded human lung carcinoma, using SPTBN5 Antibody. The picture on the right is blocked with the synthesized peptide.

Storage

-20°C for one year

501 Changsheng S Rd, Nanhu Dist, Jiaxing, Zhejiang, China

Tel: 86 21 31007137 | E-mail: save@bt-laboratory.com | www.bt-laboratory.com