

## 6CKine Polyclonal Antibody

### Description

<b>Product type</b>	Primary Antibody
<b>Code</b>	BT-AP08504
<b>Host</b>	Rabbit
<b>Isotype</b>	IgG
<b>Size</b>	20ul, 50ul, 100ul
<b>Immunogen</b>	The antiserum was produced against synthesized peptide derived from the Internal region of human CCL21. AA range:71-120
<b>Mol wt</b>	N/A
<b>Species reactivity</b>	Human, Rat, Mouse
<b>Clonality</b>	Polyclonal
<b>Recommended application</b>	IHC-p, IF, ELISA
<b>Concentration</b>	1 mg/ml
<b>Full name</b>	C-C motif chemokine 21
<b>Synonyms</b>	C-C motif chemokine 21 (6CKine;Beta-chemokine exodus-2;Secondary lymphoid-tissue chemokine;SLC;Small-inducible cytokine A21); C-C motif chemokine 21; 6CKine; Beta-chemokine exodus-2; Secondary lymphoid-tissue chemokine; SLC; Small-inducible cytokine A21)

**This product is for research use only, not for use in human, therapeutic or diagnostic procedure.**

### Background

This antimicrobial gene is one of several CC cytokine genes clustered on the p-arm of chromosome 9. Cytokines are a family of secreted proteins involved in immunoregulatory and inflammatory processes. The CC cytokines are proteins characterized by two adjacent cysteines. Similar to other chemokines the protein encoded by this gene inhibits hemopoiesis and stimulates chemotaxis. This protein is chemotactic in vitro for thymocytes and activated T cells| but not for B cells| macrophages| or neutrophils. The cytokine encoded by this gene may also play a role in mediating homing of lymphocytes to secondary lymphoid organs. It is a high affinity functional ligand for chemokine receptor 7 that is expressed on T and B lymphocytes and a known receptor for another member of the cytokine family (small inducible cytokine A19).

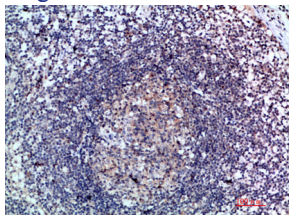
### Recommended Dilution

IHC-p: 1: 50 - 1: 200

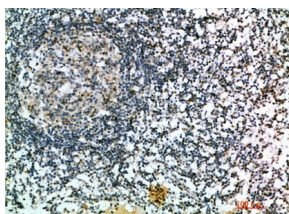
ELISA: 1: 10000 - 1: 20000

Not yet tested in other applications.

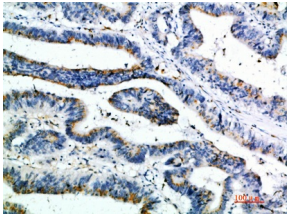
### Images



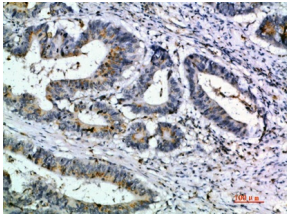
Immunohistochemical analysis of paraffin-embedded human-lymph, antibody was diluted at 1:200



Immunohistochemical analysis of paraffin-embedded human-lymph, antibody was diluted at 1:200



Immunohistochemical analysis of paraffin-embedded human-colon-cancer, antibody was diluted at 1:200



Immunohistochemical analysis of paraffin-embedded human-colon-cancer, antibody was diluted at 1:200

### Storage

-20°C for 1 year

501 Changsheng S Rd, Nanhu Dist, Jiaxing, Zhejiang, China

Tel: 86 21 31007137 | E-mail: [save@bt-laboratory.com](mailto:save@bt-laboratory.com) | [www.bt-laboratory.com](http://www.bt-laboratory.com)