

Spindlin-1 Polyclonal Antibody

Description

Product type	Primary Antibody
Code	BT-AP08508
Host	Rabbit
Isotype	IgG
Size	20ul, 50ul, 100ul
Immunogen	The antiserum was produced against synthesized peptide derived from human SPIN1. AA range:111-160
Mol wt	29601
Species reactivity	Human, Mouse, Rat
Clonality	Polyclonal
Recommended application	WB, IHC-p, IF, ELISA
Concentration	1 mg/ml
Full name	Spindlin-1 Antibody
Synonyms	SPIN1; OCR; SPIN; Spindlin-1; Ovarian cancer-related protein

This product is for research use only, not for use in human, therapeutic or diagnostic procedure.

Background

Sphingolipid transporter (By similarity). May be involved in necrotic or autophagic cell death.

Recommended Dilution

WB: 1: 500 - 1: 2000

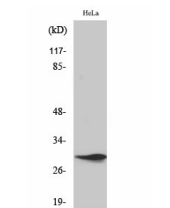
IHC: 1: 100 - 1: 300

IF: 1: 200 - 1: 1000

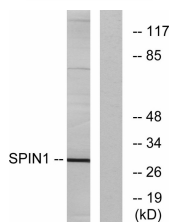
ELISA: 1: 20000

Not yet tested in other applications.

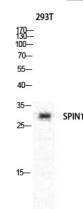
Images



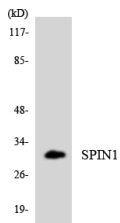
Western Blot analysis of HeLa cells using Spindlin-1 Polyclonal Antibody diluted at 1:1000 cells nucleus.



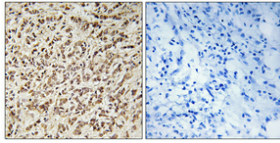
Western blot analysis of lysates from HeLa cells, using SPIN1 Antibody. The lane on the right is blocked with the synthesized peptide.



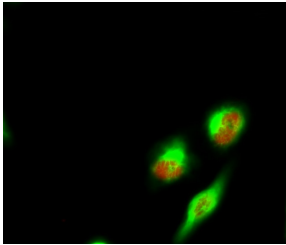
Western Blot analysis of various cells using Spindlin-1 Polyclonal Antibody diluted at 1:1000 cells nucleus.



Western blot analysis of the lysates from K562 cells using SPIN1 antibody.



Immunohistochemical analysis of paraffin-embedded Human breast cancer. Antibody was diluted at 1:100(4° overnight). High-pressure and temperature Tris-EDTA,pH8.0 was used for antigen retrieval. Negative contrl (right) obtained from antibody was pre-absorbed by immunogen peptide.



Immunofluorescence analysis of HeLa cell. 1,Spindlin-1 Polyclonal Antibody(red) was diluted at 1:200(4° overnight). Bcl-2 Monoclonal Antibody(6B5)(green) was diluted at 1:200(4° overnight). 2, Goat Anti Rabbit Alexa Fluor 594 was diluted at 1:1000(room temperature, 50min). Goat Anti Mouse Alexa Fluor 488 was diluted at 1:1000(room temperature, 50min).

Storage

-20°C for one year

501 Changsheng S Rd, Nanhu Dist, Jiaxing, Zhejiang, China

Tel: 86 21 31007137 | E-mail: save@bt-laboratory.com | www.bt-laboratory.com