

7B2 Polyclonal Antibody

Description

Product type	Primary Antibody
Code	BT-AP08510
Host	Rabbit
Isotype	IgG
Size	20ul, 50ul, 100ul
Immunogen	Synthesized peptide derived from human protein . at AA range: 90-170
Mol wt	N/A
Species reactivity	Human, Mouse, Rat
Clonality	Polyclonal
Recommended application	WB, ELISA
Concentration	1 mg/ml
Full name	Neuroendocrine protein 7B2
Synonyms	Neuroendocrine protein 7B2 (Pituitary polypeptide;Secretogranin V;Secretogranin-5;Secretory granule endocrine protein I) [Cleaved into: N-terminal peptide; C-terminal peptide]

This product is for research use only, not for use in human, therapeutic or diagnostic procedure.

Background

This gene encodes a secreted chaperone protein that prevents the aggregation of other secreted proteins| including proteins that are associated with neurodegenerative and metabolic disease. The encoded protein may be best known for its role in the trafficking and activation of prohormone convertase PC2 (encoded by Gene ID: 5126). Phosphorylation of the encoded protein has been shown to have an inhibitory effect on its chaperone function.

Recommended Dilution

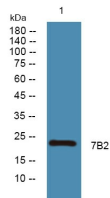
WB: 1: 500 - 1: 2000

ELISA: 1: 5000 - 1: 20000

ELISA: 1: 20000

Not yet tested in other applications.

Images



Western blot analysis of lysates from K562 cells, primary antibody was diluted at 1:1000, 4°C overnight

Storage

-20°C for 1 year