

SPT3 Polyclonal Antibody

Description

Product type	Primary Antibody
Code	BT-AP08519
Host	Rabbit
Isotype	IgG
Size	20ul, 50ul, 100ul
Immunogen	The antiserum was produced against synthesized peptide derived from human SUPT3H. AA range:171-220
Mol wt	44362
Species reactivity	Human
Clonality	Polyclonal
Recommended application	WB, IHC-p, ELISA
Concentration	1 mg/ml
Full name	SPT3 Antibody
Synonyms	SUPT3H; SPT3; Transcription initiation protein SPT3 homolog; SPT3-like protein

This product is for research use only, not for use in human, therapeutic or diagnostic procedure.

Background

SUPT3H (SPT3 Homolog, SAGA And STAGA Complex Component) is a Protein Coding gene. Diseases associated with SUPT3H include blastic plasmacytoid dendritic cell. Among its related pathways are Validated targets of C-MYC transcriptional activation and Chromatin organization. Gene Ontology (GO) annotations related to this gene include protein heterodimerization activity and histone acetyltransferase activity. Probable transcriptional activator.

Recommended Dilution

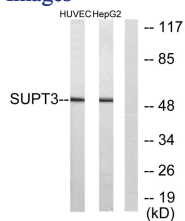
WB: 1: 500 - 1: 2000

IHC: 1: 100 - 1: 300

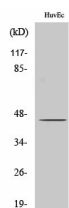
ELISA: 1: 20000

Not yet tested in other applications.

Images



Western blot analysis of lysates from HUVEC and HepG2 cells, using SUPT3H Antibody. The lane on the right is blocked with the synthesized peptide.



Western Blot analysis of various cells using SPT3 Polyclonal Antibody cells nucleus.

Storage

-20°C for one year

501 Changsheng S Rd, Nanhu Dist, Jiaxing, Zhejiang, China

Tel: 86 21 31007137 | E-mail: save@bt-laboratory.com | www.bt-laboratory.com