

## I-FABP Polyclonal Antibody

### Description

Product type	Primary Antibody
Code	BT-AP08525
Host	Rabbit
Isotype	IgG
Size	20ul, 50ul, 100ul
Immunogen	Synthetic peptide from human protein at AA range: 90-132
Mol wt	N/A
Species reactivity	Human, Mouse, Rat
Clonality	Polyclonal
Recommended application	WB, IHC-p, IF, ELISA
Concentration	1 mg/ml
Full name	Fatty acid-binding protein  intestinal
Synonyms	Fatty acid-binding protein; intestinal (Fatty acid-binding protein 2;Intestinal-type fatty acid-binding protein;I-FABP); Fatty acid-binding protein; intestinal; Fatty acid-binding protein 2; Intestinal-type fatty acid-binding protein; I-FABP)

**This product is for research use only, not for use in human, therapeutic or diagnostic procedure.**

### Background

The intracellular fatty acid-binding proteins (FABPs) belong to a multigene family with nearly twenty identified members. FABPs are divided into at least three distinct types| namely the hepatic-| intestinal- and cardiac-type. They form 14-15 kDa proteins and are thought to participate in the uptake| intracellular metabolism and/or transport of long-chain fatty acids. They may also be responsible in the modulation of cell growth and proliferation. Intestinal fatty acid-binding protein 2 gene contains four exons and is an abundant cytosolic protein in small intestine epithelial cells. This gene has a polymorphism at codon 54 that identified an alanine-encoding allele and a threonine-encoding allele. Thr-54 protein is associated with increased fat oxidation and insulin resistance.

### Recommended Dilution

WB: 1: 500 - 1: 2000

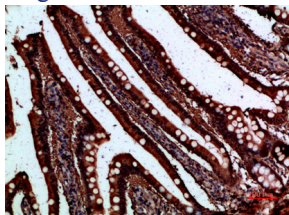
IHC-p: 1: 500 - 1: 200

ELISA: 1: 20000

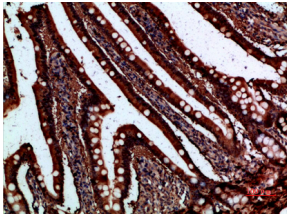
ELISA: 1: 10000 - 1: 20000

Not yet tested in other applications.

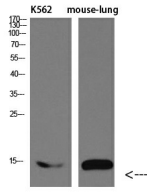
### Images



Immunohistochemical analysis of paraffin-embedded human-small-intestine, antibody was diluted at 1:200



Immunohistochemical analysis of paraffin-embedded human-small-intestine, antibody was diluted at 1:200



Western blot analysis of mouse-brain mouse-spinal-cord lysate, antibody was diluted at 2000.  
Secondary antibody was diluted at 1:20000

### Storage

-20°C for 1 year

501 Changsheng S Rd, Nanhu Dist, Jiaxing, Zhejiang, China

Tel: 86 21 31007137 | E-mail: [save@bt-laboratory.com](mailto:save@bt-laboratory.com) | [www.bt-laboratory.com](http://www.bt-laboratory.com)