

SPZ1 Polyclonal Antibody

Description

Product type	Primary Antibody
Code	BT-AP08526
Host	Rabbit
Isotype	IgG
Size	20ul, 50ul, 100ul
Immunogen	The antiserum was produced against synthesized peptide derived from human SPZ1. AA range:111-160
Mol wt	133357
Species reactivity	Human
Clonality	Polyclonal
Recommended application	IHC-p, IF, WB, ELISA
Concentration	1 mg/ml
Full name	SPZ1 Antibody
Synonyms	SPZ1; TSP1; Spermatogenic leucine zipper protein 1; Testis-specific protein 1; Testis-specific protein NYD-TSP1

This product is for research use only, not for use in human, therapeutic or diagnostic procedure.

Background

SPZ1 (spermatogenic leucine zipper 1) encodes a bHLH-zip transcription factor which functions in the mitogen-activate protein kinase (MAPK) signaling pathway. Because of its role in the upregulation of cell proliferation and tumorigenesis, SPZ1 may serve as a target for Ras-induced tumor treatments.

Recommended Dilution

WB: 1: 500 - 2000

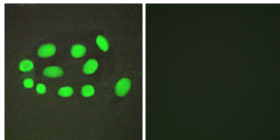
IF: 1: 200 - 1: 1000

ELISA: 1: 20000

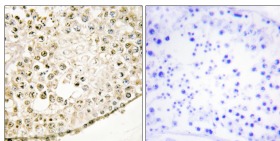
IHC: 1: 100 - 1: 300

Not yet tested in other applications.

Images



Immunofluorescence analysis of A549 cells, using SPZ1 Antibody. The picture on the right is blocked with the synthesized peptide.



Immunohistochemistry analysis of paraffin-embedded human testis tissue, using SPZ1 Antibody. The picture on the right is blocked with the synthesized peptide.

Storage

-20°C for one year