

SR-1B Polyclonal Antibody

Description

Product type	Primary Antibody
Code	BT-AP08528
Host	Rabbit
Isotype	IgG
Size	20ul, 50ul, 100ul
Immunogen	The antiserum was produced against synthesized peptide derived from human 5-HT-1B. AA range:201-250
Mol wt	43568
Species reactivity	Human, Mouse, Rat
Clonality	Polyclonal
Recommended application	WB, IHC-p, IF, ELISA
Concentration	1 mg/ml
Full name	SR-1B Antibody
Synonyms	HTR1B; HTR1DB; 5-hydroxytryptamine receptor 1B; 5-HT-1B; 5-HT1B; S12; Serotonin 1D beta receptor; 5-HT-1D-beta; Serotonin receptor 1B

This product is for research use only, not for use in human, therapeutic or diagnostic procedure.

Background

The 5-hydroxytryptamine receptor 1B encoded by HTR1B is a G-protein coupled receptor for serotonin (5-hydroxytryptamine). Ligand binding activates second messengers that inhibit the activity of adenylate cyclase and manage the release of serotonin, dopamine, and acetylcholine in the brain. The encoded protein may be involved in several neuropsychiatric disorders and therefore is often a target of antidepressant and other psychotherapeutic drugs.

Recommended Dilution

WB: 1: 500 - 1: 2000

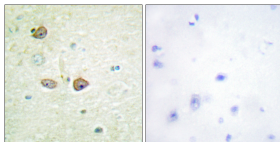
IHC: 1: 100 - 1: 300

IF: 1: 200 - 1: 1000

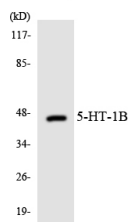
ELISA: 1: 10000

Not yet tested in other applications.

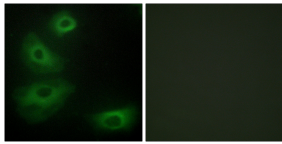
Images



Immunohistochemistry analysis of paraffin-embedded human brain tissue, using 5-HT-1B Antibody. The picture on the right is blocked with the synthesized peptide.



Western blot analysis of the lysates from HepG2 cells using 5-HT-1B antibody.



Immunofluorescence analysis of HeLa cells, using 5-HT-1B Antibody. The picture on the right is blocked with the synthesized peptide.

Storage

-20°C for one year

501 Changsheng S Rd, Nanhu Dist, Jiaxing, Zhejiang, China

Tel: 86 21 31007137 | E-mail: save@bt-laboratory.com | www.bt-laboratory.com