

## SR-1B Polyclonal Antibody

### Description

<b>Product type</b>	Primary Antibody
<b>Code</b>	BT-AP08529
<b>Host</b>	Rabbit
<b>Isotype</b>	IgG
<b>Size</b>	20ul, 50ul, 100ul
<b>Immunogen</b>	The antiserum was produced against synthesized peptide derived from human HTR1B. AA range:261-310
<b>Mol wt</b>	43568
<b>Species reactivity</b>	Human, Mouse, Rat
<b>Clonality</b>	Polyclonal
<b>Recommended application</b>	WB, IF, ELISA
<b>Concentration</b>	1 mg/ml
<b>Full name</b>	SR-1B Antibody
<b>Synonyms</b>	HTR1B; HTR1DB; 5-hydroxytryptamine receptor 1B; 5-HT-1B; 5-HT1B; S12; Serotonin 1D beta receptor; 5-HT-1D-beta; Serotonin receptor 1B

**This product is for research use only, not for use in human, therapeutic or diagnostic procedure.**

### Background

The 5-hydroxytryptamine receptor 1B encoded by HTR1B is a G-protein coupled receptor for serotonin (5-hydroxytryptamine). Ligand binding activates second messengers that inhibit the activity of adenylate cyclase and manage the release of serotonin, dopamine, and acetylcholine in the brain. The encoded protein may be involved in several neuropsychiatric disorders and therefore is often a target of antidepressant and other psychotherapeutic drugs.

### Recommended Dilution

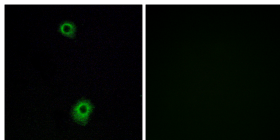
WB: 1: 500 - 1: 2000

IF: 1: 200 - 1: 1000

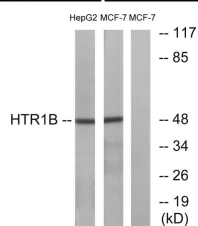
ELISA: 1: 40000

Not yet tested in other applications.

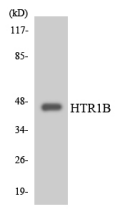
### Images



Immunofluorescence analysis of A549 cells, using HTR1B Antibody. The picture on the right is blocked with the synthesized peptide.



Western blot analysis of lysates from HepG2 and MCF-7 cells, using HTR1B Antibody. The lane on the right is blocked with the synthesized peptide.



Western blot analysis of the lysates from COLO205 cells using HTR1B antibody.

### Storage

-20°C for one year

501 Changsheng S Rd, Nanhu Dist, Jiaxing, Zhejiang, China

Tel: 86 21 31007137 | E-mail: [save@bt-laboratory.com](mailto:save@bt-laboratory.com) | [www.bt-laboratory.com](http://www.bt-laboratory.com)