

## SR-1F Polyclonal Antibody

### Description

<b>Product type</b>	Primary Antibody
<b>Code</b>	BT-AP08532
<b>Host</b>	Rabbit
<b>Isotype</b>	IgG
<b>Size</b>	20ul, 50ul, 100ul
<b>Immunogen</b>	The antiserum was produced against synthesized peptide derived from human 5-HT-1F. AA range:101-150
<b>Mol wt</b>	41709
<b>Species reactivity</b>	Human, Mouse, Rat, Monkey
<b>Clonality</b>	Polyclonal
<b>Recommended application</b>	WB, IF, ELISA
<b>Concentration</b>	1 mg/ml
<b>Full name</b>	SR-1F Antibody
<b>Synonyms</b>	HTR1F; HTR1EL; 5-hydroxytryptamine receptor 1F; 5-HT-1F; 5-HT1F; Serotonin receptor 1F

**This product is for research use only, not for use in human, therapeutic or diagnostic procedure.**

### Background

HTR1F (5-Hydroxytryptamine Receptor 1F) is a Protein Coding gene. Diseases associated with HTR1F include migraine with or without aura 1. Among its related pathways are Signaling by GPCR and cAMP signaling pathway. Gene Ontology (GO) annotations related to this gene include G-protein coupled receptor activity and serotonin binding. An important paralog of this gene is DRD4. G-protein coupled receptor for 5-hydroxytryptamine (serotonin). Also functions as a receptor for various alkaloids and psychoactive substances. Ligand binding causes a conformation change that triggers signaling via guanine nucleotide-binding proteins (G proteins) and modulates the activity of down-stream effectors, such as adenylate cyclase. Signaling inhibits adenylate cyclase activity. Serotonin 5-HT1F receptors, previously known as 5-HT1Ebeta receptors, are located primarily in the hippocampus, cortex and dorsal raphe nucleus. The human 5-HT1F receptor is closely related to the 5-ht1E receptor and its gene has been localized to chromosome 3 (3q11).

### Recommended Dilution

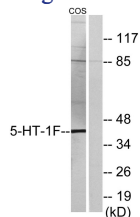
WB: 1: 500 - 1: 2000

IF: 1: 200 - 1: 1000

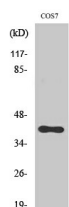
ELISA: 1: 40000

Not yet tested in other applications.

### Images



Western blot analysis of lysates from COS7 cells, using 5-HT-1F Antibody. The lane on the right is blocked with the synthesized peptide.



Western Blot analysis of various cells using SR-1F Polyclonal Antibody diluted at 1:1000

## Storage

-20°C for one year

501 Changsheng S Rd, Nanhu Dist, Jiaxing, Zhejiang, China

Tel: 86 21 31007137 | E-mail: [save@bt-laboratory.com](mailto:save@bt-laboratory.com) | [www.bt-laboratory.com](http://www.bt-laboratory.com)