

## SR-2A Polyclonal Antibody

### Description

Product type	Primary Antibody
Code	BT-AP08533
Host	Rabbit
Isotype	IgG
Size	20ul, 50ul, 100ul
Immunogen	The antiserum was produced against synthesized peptide derived from human 5-HT-2A. AA range:422-471
Mol wt	52603
Species reactivity	Human
Clonality	Polyclonal
Recommended application	IHC-p, IF, ELISA
Concentration	1 mg/ml
Full name	SR-2A Antibody
Synonyms	HTR2A; HTR2; 5-hydroxytryptamine receptor 2A; 5-HT-2; 5-HT-2A; Serotonin receptor 2A

This product is for research use only, not for use in human, therapeutic or diagnostic procedure.

### Background

HTR2A encodes one of the receptors for serotonin, a neurotransmitter with many roles. Mutations in HTR2A are associated with susceptibility to schizophrenia and obsessive-compulsive disorder, and are also associated with response to the antidepressant citalopram in patients with major depressive disorder (MDD). MDD patients who also have a mutation in intron 2 of this gene show a significantly reduced response to citalopram as this antidepressant downregulates expression of this gene. Multiple transcript variants encoding different isoforms have been found for this gene.

### Recommended Dilution

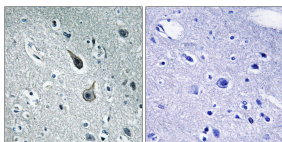
IHC: 1: 100 - 1: 300

IF: 1: 200 - 1: 1000

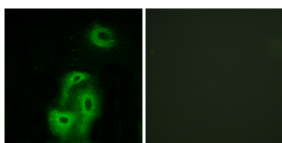
ELISA: 1: 5000

Not yet tested in other applications.

### Images



Immunohistochemistry analysis of paraffin-embedded human brain tissue, using 5-HT-2A Antibody. The picture on the right is blocked with the synthesized peptide.



Immunofluorescence analysis of A549 cells, using 5-HT-2A Antibody. The picture on the right is blocked with the synthesized peptide.

### Storage

-20°C for one year