

## SR-5A Polyclonal Antibody

### Description

<b>Product type</b>	Primary Antibody
<b>Code</b>	BT-AP08543
<b>Host</b>	Rabbit
<b>Isotype</b>	IgG
<b>Size</b>	20ul, 50ul, 100ul
<b>Immunogen</b>	The antiserum was produced against synthesized peptide derived from human 5-HT-5A. AA range:211-260
<b>Mol wt</b>	43761
<b>Species reactivity</b>	Human
<b>Clonality</b>	Polyclonal
<b>Recommended application</b>	WB, IF, ELISA
<b>Concentration</b>	1 mg/ml
<b>Full name</b>	SR-5A Antibody
<b>Synonyms</b>	HTR5A; 5-hydroxytryptamine receptor 5A; 5-HT-5; 5-HT-5A; 5-HT5A; Serotonin receptor 5A

This product is for research use only, not for use in human, therapeutic or diagnostic procedure.

### Background

HTR4 is a member of the family of serotonin receptors, which are G protein coupled receptors that stimulate cAMP production in response to serotonin (5-hydroxytryptamine). The gene product is a glycosylated transmembrane protein that functions in both the peripheral and central nervous system to modulate the release of various neurotransmitters. Multiple transcript variants encoding proteins with distinct C-terminal sequences have been described.

### Recommended Dilution

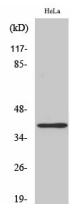
WB: 1: 500 - 1: 2000

IF: 1: 200 - 1: 1000

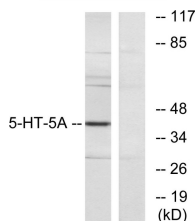
ELISA: 1: 20000

Not yet tested in other applications.

### Images



Western Blot analysis of various cells using SR-5A Polyclonal Antibody



Western blot analysis of lysates from HeLa cells, using 5-HT-5A Antibody. The lane on the right is blocked with the synthesized peptide.

## Storage

-20°C for one year

501 Changsheng S Rd, Nanhu Dist, Jiaxing, Zhejiang, China

Tel: 86 21 31007137 | E-mail: [save@bt-laboratory.com](mailto:save@bt-laboratory.com) | [www.bt-laboratory.com](http://www.bt-laboratory.com)