

SR-6 Polyclonal Antibody

Description

Product type	Primary Antibody
Code	BT-AP08545
Host	Rabbit
Isotype	IgG
Size	20ul, 50ul, 100ul
Immunogen	The antiserum was produced against synthesized peptide derived from human 5-HT-6. AA range:221-270
Mol wt	46954
Species reactivity	Human, Mouse, Rat
Clonality	Polyclonal
Recommended application	WB, ELISA
Concentration	1 mg/ml
Full name	SR-6 Antibody
Synonyms	HTR6; 5-hydroxytryptamine receptor 6; 5-HT-6; 5-HT6; Serotonin receptor 6

This product is for research use only, not for use in human, therapeutic or diagnostic procedure.

Background

HTR6 encodes 5-hydroxytryptamine receptor 6 that belongs to the seven-transmembrane G protein-coupled receptor family of proteins. The encoded protein couples with the Gs alpha subunit and stimulates adenylate cyclase to activate the cyclic AMP-dependent signaling pathway. This receptor is thought to regulate cholinergic neuronal transmission in the brain. Several antidepressants and antipsychotic drugs have a high affinity for this receptor.

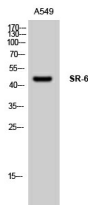
Recommended Dilution

WB: 1: 500 - 1: 2000

ELISA: 1: 20000

Not yet tested in other applications.

Images



Western Blot analysis of A549 cells using SR-6 Polyclonal Antibody

Storage

-20°C for one year