

SR-7 Polyclonal Antibody

Description

Product type	Primary Antibody
Code	BT-AP08546
Host	Rabbit
Isotype	IgG
Size	20ul, 50ul, 100ul
Immunogen	The antiserum was produced against synthesized peptide derived from human HTR7. AA range:391-440
Mol wt	53555
Species reactivity	Human, Mouse, Rat
Clonality	Polyclonal
Recommended application	IF, ELISA
Concentration	1 mg/ml
Full name	SR-7 Antibody
Synonyms	HTR7; 5-hydroxytryptamine receptor 7; 5-HT-7; 5-HT7; 5-HT-X; Serotonin receptor 7

This product is for research use only, not for use in human, therapeutic or diagnostic procedure.

Background

The neurotransmitter, serotonin, is thought to play a role in various cognitive and behavioral functions. The serotonin receptor encoded by HTR7 belongs to the superfamily of G protein-coupled receptors and the gene is a candidate locus for involvement in autistic disorder and other neuropsychiatric disorders. Three splice variants have been identified which encode proteins that differ in the length of their carboxy terminal ends.

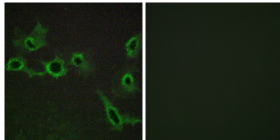
Recommended Dilution

IF: 1: 200 - 1: 1000

ELISA: 1: 5000

Not yet tested in other applications.

Images



Immunofluorescence analysis of COS7 cells, using HTR7 Antibody. The picture on the right is blocked with the synthesized peptide.

Storage

-20°C for one year