

Srb7 Polyclonal Antibody

Description

Product type	Primary Antibody
Code	BT-AP08547
Host	Rabbit
Isotype	IgG
Size	20ul, 50ul, 100ul
Immunogen	The antiserum was produced against synthesized peptide derived from human MED21. AA range:71-120
Mol wt	15564
Species reactivity	Human, Mouse
Clonality	Polyclonal
Recommended application	IHC-p, ELISA
Concentration	1 mg/ml
Full name	Srb7 Antibody
Synonyms	MED21; SRB7; SURB7; Mediator of RNA polymerase II transcription subunit 21; Mediator complex subunit 21; RNA polymerase II holoenzyme component SRB7; RNAPII complex component SRB7; hSrb7

This product is for research use only, not for use in human, therapeutic or diagnostic procedure.

Background

MED21 (mediator complex subunit 21) encodes a member of the mediator complex subunit 21 family. The encoded protein interacts with the human RNA polymerase II holoenzyme and is involved in transcriptional regulation of RNA polymerase II transcribed genes. A pseudogene of MED21 is located on chromosome 8. Alternative splicing results in multiple transcript variants.

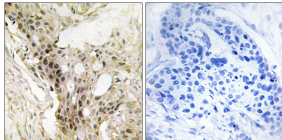
Recommended Dilution

IHC: 1: 100 - 1: 300

ELISA: 1: 20000

Not yet tested in other applications.

Images



Immunohistochemistry analysis of paraffin-embedded human breast carcinoma tissue, using MED21 Antibody. The picture on the right is blocked with the synthesized peptide.

Storage

-20°C for one year

501 Changsheng S Rd, Nanhu Dist, Jiaxing, Zhejiang, China

Tel: 86 21 31007137 | E-mail: save@bt-laboratory.com | www.bt-laboratory.com