

SRE-ZBP Polyclonal Antibody

Description

Product type	Primary Antibody
Code	BT-AP08557
Host	Rabbit
Isotype	IgG
Size	20ul, 50ul, 100ul
Immunogen	The antiserum was produced against synthesized peptide derived from human ZNF187. AA range:51-100
Mol wt	55254
Species reactivity	Human
Clonality	Polyclonal
Recommended application	WB, IF, ELISA
Concentration	1 mg/ml
Full name	SRE-ZBP Antibody
Synonyms	ZNF187; ZSCAN26; Zinc finger protein 187; Protein SRE-ZBP; Zinc finger and SCAN domain-containing protein 26

This product is for research use only, not for use in human, therapeutic or diagnostic procedure.

Background

May be involved in transcriptional regulation.

Recommended Dilution

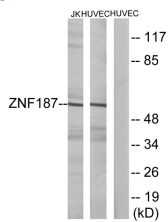
WB: 1: 500 - 1: 2000

IF: 1: 200 - 1: 1000

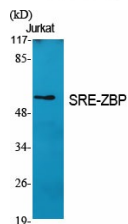
ELISA: 1: 5000

Not yet tested in other applications.

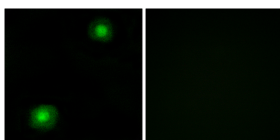
Images



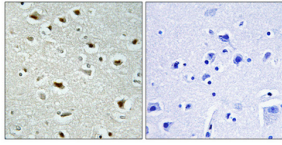
Western blot analysis of lysates from Jurkat and HUVEC cells, using ZNF187 Antibody. The lane on the right is blocked with the synthesized peptide.



Western Blot analysis of various cells using SRE-ZBP Polyclonal Antibody cells nucleus.



Immunofluorescence analysis of A549 cells, using ZNF187 Antibody. The picture on the right is blocked with the synthesized peptide.



Immunohistochemical analysis of paraffin-embedded Human brain. Antibody was diluted at 1:100(4° overnight). High-pressure and temperature Tris-EDTA,pH8.0 was used for antigen retrieval. Negative contrl (right) obtaned from antibody was pre-absorbed by immunogen peptide.

Storage

-20°C for one year

501 Changsheng S Rd, Nanhu Dist, Jiaxing, Zhejiang, China

Tel: 86 21 31007137 | E-mail: save@bt-laboratory.com | www.bt-laboratory.com