

SRp20 Polyclonal Antibody

Description

Product type	Primary Antibody
Code	BT-AP08562
Host	Rabbit
Isotype	IgG
Size	20ul, 50ul, 100ul
Immunogen	The antiserum was produced against synthesized peptide derived from human SFRS3. AA range:111-160
Mol wt	19330
Species reactivity	Human, Mouse
Clonality	Polyclonal
Recommended application	WB, IHC-p, IF, ELISA
Concentration	1 mg/ml
Full name	SRp20 Antibody
Synonyms	SRSF3; SFRS3; SRP20; Serine/arginine-rich splicing factor 3; Pre-mRNA-splicing factor SRP20; Splicing factor; arginine/serine-rich 3

This product is for research use only, not for use in human, therapeutic or diagnostic procedure.

Background

Serine/arginine-rich splicing factor 3 encoded by SRSF3 is a member of the serine/arginine (SR)-rich family of pre-mRNA splicing factors, which constitute part of the spliceosome. Each of these factors contains an RNA recognition motif (RRM) for binding RNA and an RS domain for binding other proteins. The RS domain is rich in serine and arginine residues and facilitates interaction between different SR splicing factors. In addition to being critical for mRNA splicing, the SR proteins have also been shown to be involved in mRNA export from the nucleus and in translation. Two transcript variants, one protein-coding and the other non-coding, have been found for this gene.

Recommended Dilution

WB: 1: 500 - 1: 2000

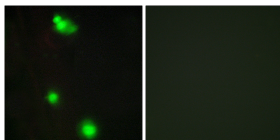
IHC: 1: 100 - 1: 300

IF: 1: 200 - 1: 1000

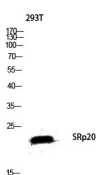
ELISA: 1: 5000

Not yet tested in other applications.

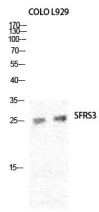
Images



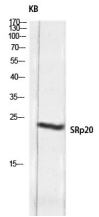
Immunofluorescence analysis of MCF7 cells, using SFRS3 Antibody. The picture on the right is blocked with the synthesized peptide.



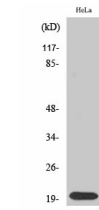
Western blot analysis of 293T lysis using SRp20 antibody. Antibody was diluted at 1:2000 cells nucleus.



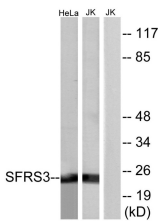
Western Blot analysis of various cells using SRp20 Polyclonal Antibody diluted at 1:2000 cells nucleus.



Western blot analysis of KB lysis using SRp20 antibody. Antibody was diluted at 1:2000 cells nucleus.



Western Blot analysis of Jurkat cells using SRp20 Polyclonal Antibody diluted at 1:2000 cells nucleus.



Western blot analysis of lysates from HeLa and Jurkat cells, using SFRS3 Antibody. The lane on the right is blocked with the synthesized peptide.

Storage

-20°C for one year

501 Changsheng S Rd, Nanhu Dist, Jiaxing, Zhejiang, China

Tel: 86 21 31007137 | E-mail: save@bt-laboratory.com | www.bt-laboratory.com