

## SRp40 Polyclonal Antibody

### Description

Product type	Primary Antibody
Code	BT-AP08563
Host	Rabbit
Isotype	IgG
Size	20ul, 50ul, 100ul
Immunogen	The antiserum was produced against synthesized peptide derived from human SFRS5. AA range:71-120
Mol wt	31264
Species reactivity	Human, Mouse, Rat
Clonality	Polyclonal
Recommended application	IHC-p, IF, ELISA
Concentration	1 mg/ml
Full name	SRp40 Antibody
Synonyms	SRSF5; HRS; SFRS5; SRP40; Serine/arginine-rich splicing factor 5; Delayed-early protein HRS; Pre-mRNA-splicing factor SRP40; Splicing factor; arginine/serine-rich 5

**This product is for research use only, not for use in human, therapeutic or diagnostic procedure.**

### Background

The protein encoded by SRSF5 (serine and arginine rich splicing factor 5) is a member of the serine/arginine (SR)-rich family of pre-mRNA splicing factors, which constitute part of the spliceosome. Each of these factors contains an RNA recognition motif (RRM) for binding RNA and an RS domain for binding other proteins. The RS domain is rich in serine and arginine residues and facilitates interaction between different SR splicing factors. In addition to being critical for mRNA splicing, the SR proteins have also been shown to be involved in mRNA export from the nucleus and in translation. Alternative splicing results in multiple transcript variants.

### Recommended Dilution

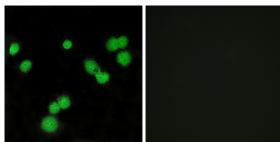
IHC: 1: 100 - 1: 300

IF: 1: 200 - 1: 1000

ELISA: 1: 20000

Not yet tested in other applications.

### Images



Immunofluorescence analysis of MCF7 cells, using SFRS5 Antibody. The picture on the right is blocked with the synthesized peptide.

### Storage

-20°C for one year