

SRPK3 Polyclonal Antibody

Description

Product type	Primary Antibody
Code	BT-AP08570
Host	Rabbit
Isotype	IgG
Size	20ul, 50ul, 100ul
Immunogen	The antiserum was produced against synthesized peptide derived from human SRPK3. AA range:261-310
Mol wt	58997
Species reactivity	Human, Mouse, Rat
Clonality	Polyclonal
Recommended application	WB, ELISA
Concentration	1 mg/ml
Full name	SRPK3 Antibody
Synonyms	SRPK3; MSSK1; STK23; SRSF protein kinase 3; Muscle-specific serine kinase 1; MSSK-1; Serine/arginine-rich protein-specific kinase 3; SR-protein-specific kinase 3; Serine/threonine-protein kinase 23

This product is for research use only, not for use in human, therapeutic or diagnostic procedure.

Background

SRPK3 encodes SRSF protein kinase 3 similar to a protein kinase which is specific for the SR (serine/arginine-rich domain) family of splicing factors. A highly similar protein has been shown to play a role in muscle development in mice. Multiple transcript variants encoding different isoforms have been found for SRPK3.

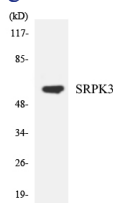
Recommended Dilution

WB: 1: 500 - 1: 2000

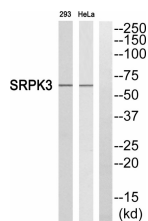
ELISA: 1: 10000

Not yet tested in other applications.

Images



Western blot analysis of the lysates from HeLa cells using SRPK3 antibody.



Western blot analysis of SRPK3 Antibody. The lane on the right is blocked with the SRPK3 peptide.

Storage

-20°C for one year

501 Changsheng S Rd, Nanhu Dist, Jiaxing, Zhejiang, China

Tel: 86 21 31007137 | E-mail: save@bt-laboratory.com | www.bt-laboratory.com