

SSBP1 Polyclonal Antibody

Description

Product type	Primary Antibody
Code	BT-AP08580
Host	Rabbit
Isotype	IgG
Size	20ul, 50ul, 100ul
Immunogen	The antiserum was produced against synthesized peptide derived from human MtSSB. AA range:99-148
Mol wt	17260
Species reactivity	Human, Mouse, Rat
Clonality	Polyclonal
Recommended application	WB, IHC-p, IF, ELISA
Concentration	1 mg/ml
Full name	SSBP1 Antibody
Synonyms	SSBP1; SSBP; Single-stranded DNA-binding protein; mitochondrial; Mt-SSB; MtSSB; PWP1-interacting protein 17

This product is for research use only, not for use in human, therapeutic or diagnostic procedure.

Background

SSBP1 is a housekeeping gene involved in mitochondrial biogenesis. It is also a subunit of a single-stranded DNA (ssDNA)-binding complex involved in the maintenance of genome stability.

Recommended Dilution

WB: 1: 500 - 1: 2000

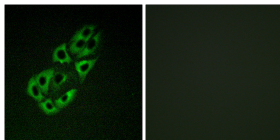
IHC: 1: 100 - 1: 300

IF: 1: 200 - 1: 1000

ELISA: 1: 20000

Not yet tested in other applications.

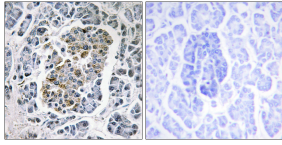
Images



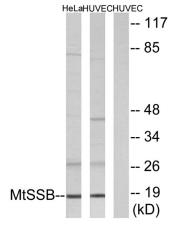
Immunofluorescence analysis of A549 cells, using MtSSB Antibody. The picture on the right is blocked with the synthesized peptide.



Western Blot analysis of various cells using SSBP1 Polyclonal Antibody



Immunohistochemistry analysis of paraffin-embedded human pancreas tissue, using MtSSB Antibody. The picture on the right is blocked with the synthesized peptide.



Western blot analysis of lysates from HUVEC and HeLa cells, using MtSSB Antibody. The lane on the right is blocked with the synthesized peptide.

Storage

-20°C for one year

501 Changsheng S Rd, Nanhu Dist, Jiaxing, Zhejiang, China

Tel: 86 21 31007137 | E-mail: save@bt-laboratory.com | www.bt-laboratory.com