

SSBP2 Polyclonal Antibody

Description

Product type	Primary Antibody
Code	BT-AP08581
Host	Rabbit
Isotype	IgG
Size	20ul, 50ul, 100ul
Immunogen	The antiserum was produced against synthesized peptide derived from human SSBP2. AA range:10-59
Mol wt	37828
Species reactivity	Human, Mouse
Clonality	Polyclonal
Recommended application	WB, IHC-p, ELISA
Concentration	1 mg/ml
Full name	SSBP2 Antibody
Synonyms	SSBP2; SSDP2; Single-stranded DNA-binding protein 2; Sequence-specific single-stranded-DNA-binding protein 2

This product is for research use only, not for use in human, therapeutic or diagnostic procedure.

Background

SSBP2 is a subunit of a single-stranded DNA (ssDNA)-binding complex involved in the maintenance of genome stability (Huang et al. 2009) [PubMed 19683501].

Recommended Dilution

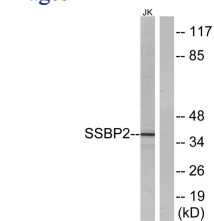
WB: 1: 500 - 1: 2000

IHC: 1: 100 - 1: 300

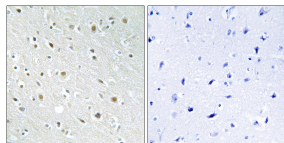
ELISA: 1: 10000

Not yet tested in other applications.

Images



Western blot analysis of lysates from Jurkat cells, using SSBP2 Antibody. The lane on the right is blocked with the synthesized peptide.



Immunohistochemistry analysis of paraffin-embedded human brain tissue, using SSBP2 Antibody. The picture on the right is blocked with the synthesized peptide.

Storage

-20°C for one year