

ID1 Polyclonal Antibody

Description

Product type	Primary Antibody
Code	BT-AP08586
Host	Rabbit
Isotype	IgG
Size	20ul, 50ul, 100ul
Immunogen	Synthesized peptide derived from human protein . at AA range: 30-110
Mol wt	N/A
Species reactivity	Human, Mouse, Rat
Clonality	Polyclonal
Recommended application	WB, ELISA
Concentration	1 mg/ml
Full name	DNA-binding protein inhibitor ID-1
Synonyms	DNA-binding protein inhibitor ID-1 (Class B basic helix-loop-helix protein 24;bHLHb24;Inhibitor of DNA binding 1)

This product is for research use only, not for use in human, therapeutic or diagnostic procedure.

Background

The protein encoded by this gene is a helix-loop-helix (HLH) protein that can form heterodimers with members of the basic HLH family of transcription factors. The encoded protein has no DNA binding activity and therefore can inhibit the DNA binding and transcriptional activation ability of basic HLH proteins with which it interacts. This protein may play a role in cell growth| senescence| and differentiation. Two transcript variants encoding different isoforms have been found for this gene.

Recommended Dilution

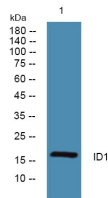
WB: 1: 500 - 1: 2000

ELISA: 1: 5000 - 1: 20000

ELISA: 1: 20000

Not yet tested in other applications.

Images



Western blot analysis of lysates from Jarkat cells, primary antibody was diluted at 1:1000, 4°C overnight

Storage

-20°C for 1 year