

SSTR2 Polyclonal Antibody

Description

Product type	Primary Antibody
Code	BT-AP08588
Host	Rabbit
Isotype	IgG
Size	20ul, 50ul, 100ul
Immunogen	The antiserum was produced against synthesized peptide derived from the Internal region of human SSTR2. AA range:220-270
Mol wt	40590
Species reactivity	Human, Mouse, Rat
Clonality	Polyclonal
Recommended application	WB, ELISA
Concentration	1 mg/ml
Full name	SSTR2 Antibody
Synonyms	Somatostatin receptor type 2 (SS-2-R) (SS2-R) (SS2R) (SRIF-1)

This product is for research use only, not for use in human, therapeutic or diagnostic procedure.

Background

Somatostatin acts at many sites to inhibit the release of many hormones and other secretory proteins. The biologic effects of somatostatin are probably mediated by a family of G protein-coupled receptors that are expressed in a tissue-specific manner. SSTR2 (somatostatin receptor 2) is a member of the superfamily of receptors having seven transmembrane segments and is expressed in highest levels in cerebrum and kidney.

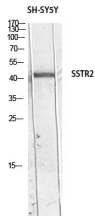
Recommended Dilution

WB: 1: 500 - 1: 2000

ELISA: 1: 10000

Not yet tested in other applications.

Images



Western blot analysis of SH-SY5Y lysis using SSTR2 antibody. Antibody was diluted at 1:500. Secondary antibody was diluted at 1:20000

Storage

-20°C for one year