

## STAC2 Polyclonal Antibody

### Description

Product type	Primary Antibody
Code	BT-AP08602
Host	Rabbit
Isotype	IgG
Size	20ul, 50ul, 100ul
Immunogen	The antiserum was produced against synthesized peptide derived from human STAC2. AA range:211-260
Mol wt	45009
Species reactivity	Human, Mouse, Rat
Clonality	Polyclonal
Recommended application	WB, ELISA
Concentration	1 mg/ml
Full name	STAC2 Antibody
Synonyms	STAC2; SH3 and cysteine-rich domain-containing protein 2; 24b2/STAC2; Src homology 3 and cysteine-rich domain-containing protein 2

This product is for research use only, not for use in human, therapeutic or diagnostic procedure.

### Background

In skeletal muscles contraction, may play a role in neuromuscular synaptic transmission.

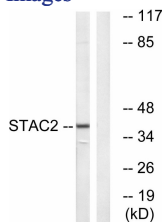
### Recommended Dilution

WB: 1: 500 - 1: 2000

ELISA: 1: 20000

Not yet tested in other applications.

### Images



Western blot analysis of lysates from K562 cells, using STAC2 Antibody. The lane on the right is blocked with the synthesized peptide.

### Storage

-20°C for one year