

STAM2 Polyclonal Antibody

Description

Product type	Primary Antibody
Code	BT-AP08606
Host	Rabbit
Isotype	IgG
Size	20ul, 50ul, 100ul
Immunogen	The antiserum was produced against synthesized peptide derived from human STAM2. AA range:161-210
Mol wt	58164
Species reactivity	Human, Mouse
Clonality	Polyclonal
Recommended application	WB, IHC-p, IF, ELISA
Concentration	1 mg/ml
Full name	STAM2 Antibody
Synonyms	STAM2; HBP; Signal transducing adapter molecule 2; STAM-2; Hrs-binding protein

This product is for research use only, not for use in human, therapeutic or diagnostic procedure.

Background

Signal transducing adapter molecule 2 encoded by STAM2 is closely related to STAM, an adaptor protein involved in the downstream signaling of cytokine receptors, both of which contain a SH3 domain and the immunoreceptor tyrosine-based activation motif (ITAM). Similar to STAM, this protein acts downstream of JAK kinases, and is phosphorylated in response to cytokine stimulation. This protein and STAM thus are thought to exhibit compensatory effects on the signaling pathway downstream of JAK kinases upon cytokine stimulation.

Recommended Dilution

WB: 1: 500 - 1: 2000

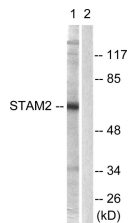
IHC: 1: 100 - 1: 300

IF: 1: 200 - 1: 1000

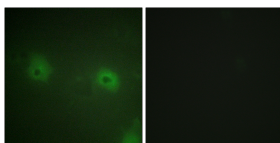
ELISA: 1: 40000

Not yet tested in other applications.

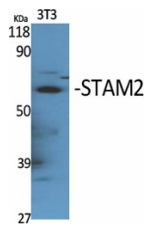
Images



Western blot analysis of lysates from NIH/3T3 cells, treated with EGF 200ng/ml 30', using STAM2 Antibody. The lane on the right is blocked with the synthesized peptide.



Immunofluorescence analysis of HUVEC cells, using STAM2 Antibody. The picture on the right is blocked with the synthesized peptide.



Western Blot analysis of various cells using STAM2 Polyclonal Antibody

Storage

-20°C for one year

501 Changsheng S Rd, Nanhu Dist, Jiaxing, Zhejiang, China

Tel: 86 21 31007137 | E-mail: save@bt-laboratory.com | www.bt-laboratory.com