

StARD13 Polyclonal Antibody

Description

Product type	Primary Antibody
Code	BT-AP08612
Host	Rabbit
Isotype	IgG
Size	20ul, 50ul, 100ul
Immunogen	The antiserum was produced against synthesized peptide derived from human STA13. AA range:101-150
Mol wt	124967
Species reactivity	Human, Mouse
Clonality	Polyclonal
Recommended application	WB, IF, ELISA
Concentration	1 mg/ml
Full name	StARD13 Antibody
Synonyms	STARD13; DLC2; GT650; StAR-related lipid transfer protein 13; 46H23.2; Deleted in liver cancer 2 protein; DLC-2; Rho GTPase-activating protein; START domain-containing protein 13; StARD13

This product is for research use only, not for use in human, therapeutic or diagnostic procedure.

Background

STARD13 (StAR related lipid transfer domain containing 13) encodes a protein which contains an N-terminal sterile alpha motif (SAM) for protein-protein interactions, followed by an ATP/GTP-binding motif, a GTPase-activating protein (GAP) domain, and a C-terminal STAR-related lipid transfer (START) domain. It may be involved in regulation of cytoskeletal reorganization, cell proliferation, and cell motility, and acts as a tumor suppressor in hepatoma cells. STARD13 is located in a region of chromosome 13 that is associated with loss of heterozygosity in hepatocellular carcinomas. Alternatively spliced transcript variants encoding different isoforms have been described for STARD13.

Recommended Dilution

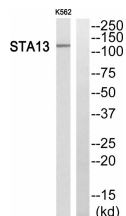
WB: 1: 500 - 1: 2000

IF: 1: 200 - 1: 1000

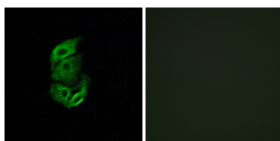
ELISA: 1: 5000

Not yet tested in other applications.

Images



Western blot analysis of STA13 Antibody. The lane on the right is blocked with the STA13 peptide.



Immunofluorescence analysis of A549 cells, using STA13 Antibody. The picture on the right is blocked with the synthesized peptide.

Storage

-20°C for one year

501 Changsheng S Rd, Nanhu Dist, Jiaxing, Zhejiang, China

Tel: 86 21 31007137 | E-mail: save@bt-laboratory.com | www.bt-laboratory.com