

Dsg1 Polyclonal Antibody

Description

Product type	Primary Antibody
Code	BT-AP08632
Host	Rabbit
Isotype	IgG
Size	20ul, 50ul, 100ul
Immunogen	The antiserum was produced against synthesized peptide derived from human DSG1. AA range:161-210
Mol wt	113748
Species reactivity	Human, Mouse
Clonality	Polyclonal
Recommended application	WB, ELISA
Concentration	1 mg/ml
Full name	Desmoglein-1
Synonyms	Desmoglein-1; DSG1; CDHF4; Desmoglein-1; Cadherin family member 4; Desmosomal glycoprotein 1; DG1; DGI; Pemphigus foliaceus antigen

This product is for research use only, not for use in human, therapeutic or diagnostic procedure.

Background

This gene encodes a member of the desmoglein protein subfamily. Desmogleins, along with desmocollins, are cadherin-like transmembrane glycoproteins that are major components of the desmosome. Desmosomes are cell-cell junctions that help resist shearing forces and are found in high concentrations in cells subject to mechanical stress. This gene is found in a cluster with other desmoglein family members on chromosome 18. The encoded protein has been identified as a target of auto-antibodies in the autoimmune skin blistering disease pemphigus foliaceus. Disruption of this gene has also been associated with the skin diseases palmoplantar keratoderma and erythroderma.

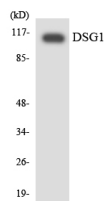
Recommended Dilution

WB: 1: 500 - 1: 2000

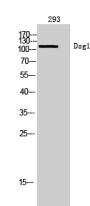
ELISA: 1: 40000

Not yet tested in other applications.

Images



Western Blot analysis of 293 cells using Dsg1 Polyclonal Antibody



Western blot analysis of the lysates from 293 cells using DSG1 antibody.

Storage

-20°C for 1 year

501 Changsheng S Rd, Nanhu Dist, Jiaxing, Zhejiang, China

Tel: 86 21 31007137 | E-mail: save@bt-laboratory.com | www.bt-laboratory.com