

## Dsg1 Polyclonal Antibody

### Description

Product type	Primary Antibody
Code	BT-AP08633
Host	Rabbit
Isotype	IgG
Size	20ul, 50ul, 100ul
Immunogen	Synthetic peptide from human protein at AA range: 30-90
Mol wt	N/A
Species reactivity	Human, Mouse, Rat
Clonality	Polyclonal
Recommended application	WB, IHC-p, IF, ELISA
Concentration	1 mg/ml
Full name	Desmoglein-1
Synonyms	Desmoglein-1 ;Cadherin family member 4;Desmosomal glycoprotein 1;DG1;DGI;Pemphigus foliaceus antigen; Desmoglein-1; Cadherin family member 4; Desmosomal glycoprotein 1; DG1; DGI; Pemphigus foliaceus antigen

This product is for research use only, not for use in human, therapeutic or diagnostic procedure.

### Background

This gene encodes a member of the desmoglein protein subfamily. Desmogleins, along with desmocollins, are cadherin-like transmembrane glycoproteins that are major components of the desmosome. Desmosomes are cell-cell junctions that help resist shearing forces and are found in high concentrations in cells subject to mechanical stress. This gene is found in a cluster with other desmoglein family members on chromosome 18. The encoded protein has been identified as a target of auto-antibodies in the autoimmune skin blistering disease pemphigus foliaceus. Disruption of this gene has also been associated with the skin diseases palmoplantar keratoderma and erythroderma.

### Recommended Dilution

WB: 1: 500 - 1: 2000

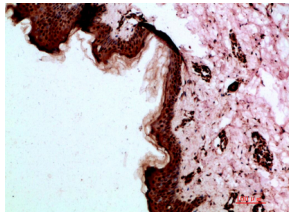
IHC-p: 1: 500 - 1: 200

ELISA: 1: 20000

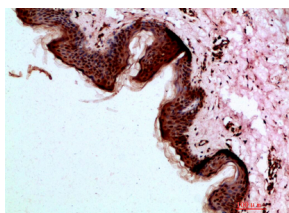
ELISA: 1: 10000 - 1: 20000

Not yet tested in other applications.

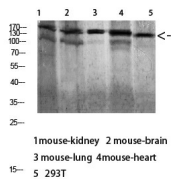
### Images



Immunohistochemical analysis of paraffin-embedded human-skin, antibody was diluted at 1:200



Immunohistochemical analysis of paraffin-embedded human-skin, antibody was diluted at 1:200



Western blot analysis of 293T lysate, antibody was diluted at 1000. Secondary antibody was diluted at 1:20000

### Storage

-20°C for 1 year

501 Changsheng S Rd, Nanhu Dist, Jiaxing, Zhejiang, China

Tel: 86 21 31007137 | E-mail: [save@bt-laboratory.com](mailto:save@bt-laboratory.com) | [www.bt-laboratory.com](http://www.bt-laboratory.com)