

STAT5a Polyclonal Antibody

Description

Product type	Primary Antibody
Code	BT-AP08641
Host	Rabbit
Isotype	IgG
Size	20ul, 50ul, 100ul
Immunogen	Synthesized peptide derived from human Stat5a around the non-phosphorylation site of S780.
Mol wt	90647
Species reactivity	Rat, Mouse
Clonality	Polyclonal
Recommended application	WB, IHC-p
Concentration	1 mg/ml
Full name	STAT5a Antibody
Synonyms	Signal transducer and activator of transcription 5A

This product is for research use only, not for use in human, therapeutic or diagnostic procedure.

Background

The protein encoded by STAT5A (signal transducer and activator of transcription 5A) is a member of the STAT family of transcription factors. In response to cytokines and growth factors, STAT family members are phosphorylated by the receptor associated kinases, and then form homo- or heterodimers that translocate to the cell nucleus where they act as transcription activators. This protein is activated by, and mediates the responses of many cell ligands, such as IL2, IL3, IL7 GM-CSF, erythropoietin, thrombopoietin, and different growth hormones. Activation of this protein in myeloma and lymphoma associated with a TEL/JAK2 gene fusion is independent of cell stimulus and has been shown to be essential for tumorigenesis. The mouse counterpart of STAT5A is found to induce the expression of BCL2L1/BCL-X (L), which suggests the antiapoptotic function of this gene in cells. Alternatively spliced transcript variants have been found for STAT5A.

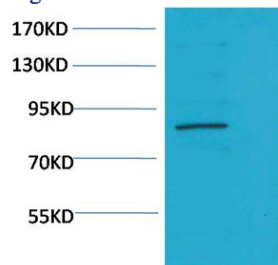
Recommended Dilution

WB: 1: 500 - 1: 2000

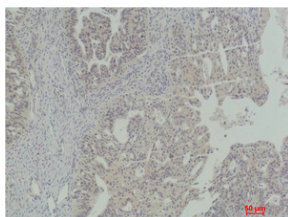
IHC-p: 1: 50 - 300

Not yet tested in other applications.

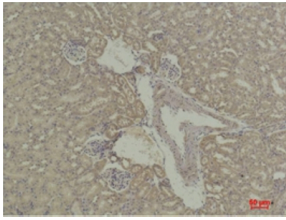
Images



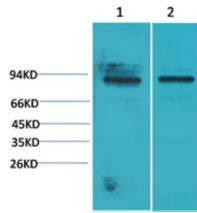
Western blot analysis of K562 using Stat5a Polyclonal Antibody. Secondary antibody was diluted at 1:20000



Immunohistochemical analysis of paraffin-embedded Human Ovarian Carcinoma using Stat5a Polyclonal Antibody.



Immunohistochemical analysis of paraffin-embedded Mouse Kidney Tissue using STAT5a Rabbit pAb diluted at 1:500.



Western blot analysis of 1) Mouse Heart Tissue, 2) Rat Heart Tissue with STAT5a Rabbit pAb diluted at 1:2,000.

Storage

-20°C for one year

501 Changsheng S Rd, Nanhu Dist, Jiaxing, Zhejiang, China

Tel: 86 21 31007137 | E-mail: save@bt-laboratory.com | www.bt-laboratory.com