

STEAP1 Polyclonal Antibody

Description

Product type	Primary Antibody
Code	BT-AP08650
Host	Rabbit
Isotype	IgG
Size	20ul, 50ul, 100ul
Immunogen	The antiserum was produced against synthesized peptide derived from human STEAP1. AA range:31-80
Mol wt	39851
Species reactivity	Human
Clonality	Polyclonal
Recommended application	WB, IHC-p, ELISA
Concentration	1 mg/ml
Full name	STEAP1 Antibody
Synonyms	STEAP1; PRSS24; STEAP; Metalloredutase STEAP1; Six-transmembrane epithelial antigen of prostate 1

This product is for research use only, not for use in human, therapeutic or diagnostic procedure.

Background

STEAP1 is predominantly expressed in prostate tissue, and is found to be upregulated in multiple cancer cell lines. The gene product is predicted to be a six-transmembrane protein, and was shown to be a cell surface antigen significantly expressed at cell-cell junctions.

Recommended Dilution

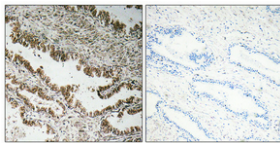
WB: 1: 500 - 1: 2000

IHC: 1: 100 - 1: 300

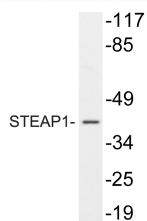
ELISA: 1: 10000

Not yet tested in other applications.

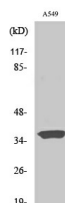
Images



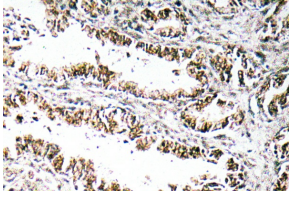
Immunohistochemical analysis of paraffin-embedded Human prostate cancer. Antibody was diluted at 1:100(4° overnight). High-pressure and temperature Tris-EDTA,pH8.0 was used for antigen retrieval. Negative contrl (right) obtained from antibody was pre-absorbed by immunogen peptide.



Western blot analysis of lysate from A549, using STEAP1 antibody.



Western Blot analysis of various cells using STEAP1 Polyclonal Antibody



Immunohistochemistry analysis of STEAP1 antibody in paraffin-embedded human prostate carcinoma tissue.

Storage

-20°C for one year

501 Changsheng S Rd, Nanhu Dist, Jiaxing, Zhejiang, China

Tel: 86 21 31007137 | E-mail: save@bt-laboratory.com | www.bt-laboratory.com