

STK32C Polyclonal Antibody

Description

Product type	Primary Antibody
Code	BT-AP08657
Host	Rabbit
Isotype	IgG
Size	20ul, 50ul, 100ul
Immunogen	The antiserum was produced against synthesized peptide derived from human STK32C. AA range:340-389
Mol wt	54994
Species reactivity	Human, Mouse
Clonality	Polyclonal
Recommended application	WB, IHC-p, ELISA
Concentration	1 mg/ml
Full name	STK32C Antibody
Synonyms	STK32C; Serine/threonine-protein kinase 32C; PKE; YANK3

This product is for research use only, not for use in human, therapeutic or diagnostic procedure.

Background

The serine/threonine kinase 32C encoded by STK32C is a member of the serine/threonine protein kinase family. It is thought that this family member is functional in brain due to its high expression levels there. DNA methylation differences have been found in this gene in monozygotic twins that are discordant for adolescent depression. Alternative splicing results in multiple transcript variants.

Recommended Dilution

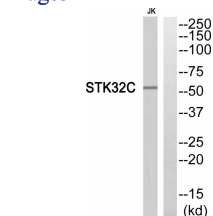
WB: 1: 500 - 1: 2000

IHC: 1: 100 - 1: 300

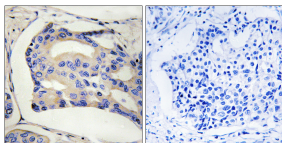
ELISA: 1: 5000

Not yet tested in other applications.

Images



Western blot analysis of STK32C Antibody. The lane on the right is blocked with the STK32C peptide.



Immunohistochemistry analysis of paraffin-embedded human breast cancer, using STK32C Antibody. The picture on the right is blocked with the STK32C peptide.

Storage

-20°C for one year