

IFI27 Polyclonal Antibody

Description

Product type	Primary Antibody
Code	BT-AP08662
Host	Rabbit
Isotype	IgG
Size	20ul, 50ul, 100ul
Immunogen	Synthesized peptide derived from human protein . at AA range: 1-80
Mol wt	N/A
Species reactivity	Human, Rat, Mouse
Clonality	Polyclonal
Recommended application	WB, ELISA
Concentration	1 mg/ml
Full name	Interferon alpha-inducible protein 27, mitochondrial
Synonyms	Interferon alpha-inducible protein 27; mitochondrial (p27);Interferon alpha-induced 11.5 kDa protein;Interferon-stimulated gene 12a protein;ISG12(a)

This product is for research use only, not for use in human, therapeutic or diagnostic procedure.

Background

induction:By alpha interferons.|Belongs to the IFI6/IFI27 family.|

Recommended Dilution

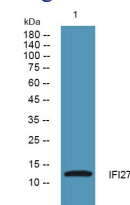
WB: 1: 500 - 1: 2000

ELISA: 1: 5000 - 1: 20000

ELISA: 1: 20000

Not yet tested in other applications.

Images



Western blot analysis of lysates from HCT116 cells, primary antibody was diluted at 1:1000, 4°C overnight

Storage

-20°C for 1 year

501 Changsheng S Rd, Nanhu Dist, Jiaxing, Zhejiang, China

Tel: 86 21 31007137 | E-mail: save@bt-laboratory.com | www.bt-laboratory.com