

SUDD Polyclonal Antibody

Description

Product type	Primary Antibody
Code	BT-AP08672
Host	Rabbit
Isotype	IgG
Size	20ul, 50ul, 100ul
Immunogen	The antiserum was produced against synthesized peptide derived from human RIOK3. AA range:271-320
Mol wt	59093
Species reactivity	Human, Mouse
Clonality	Polyclonal
Recommended application	WB, ELISA
Concentration	1 mg/ml
Full name	SUDD Antibody
Synonyms	RIOK3; SUDD; Serine/threonine-protein kinase RIO3; RIO kinase 3; sudD homolog

This product is for research use only, not for use in human, therapeutic or diagnostic procedure.

Background

RIOK3 (RIO kinase 3) was identified by the similarity of its product to the *Aspergillus nidulans* SUDD protein, an extragenic suppressor of the heat-sensitive bimD6 mutation that fails to attach properly to the spindle microtubules at a restrictive temperature. The specific function of RIOK3 has not yet been determined.

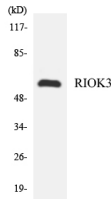
Recommended Dilution

WB: 1: 500 - 1: 2000

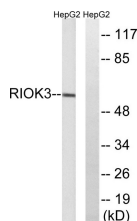
ELISA: 1: 40000

Not yet tested in other applications.

Images



Western blot analysis of the lysates from HeLa cells using RIOK3 antibody.



Western blot analysis of lysates from HepG2 cells, using RIOK3 Antibody. The lane on the right is blocked with the synthesized peptide.

Storage

-20°C for one year

