

CTGE5 Rabbit Polyclonal Antibody

Description

Product type	Primary Antibody
Code	BT-AP08674
Host	Rabbit
Isotype	IgG
Size	20ul, 50ul, 100ul
Immunogen	Synthesized peptide derived from human CTGE5
Mol wt	88440
Species reactivity	Human, Mouse
Clonality	Polyclonal
Recommended application	WB
Concentration	1 mg/ml
Full name	CTGE5
Synonyms	CTGE5

This product is for research use only, not for use in human, therapeutic or diagnostic procedure.

Background

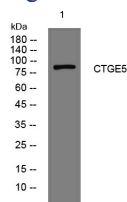
This gene encodes s receptor in the endoplasmic reticulum| which plays a role in the export of large pre-chylomicrons and pre-very low density lipoproteins (pre-VLDLs). Three major classes of transcripts are generated from this gene- melanoma inhibitory activity 2-specific transcripts| cTAGE family member 5-specific transcripts and transcripts that include exons from both these transcript species (TANGO1-like or TALI). Additionally| alternative splicing in these transcripts results in multiple transcript variants encoding multiple isoforms.

Recommended Dilution

WB: 1: 500 - 1: 2000

Not yet tested in other applications.

Images



Western blot analysis of lysates from SW480 cells, primary antibody was diluted at 1:1000, 4°C overnight

Storage

-20°C for 1 year