

SUHW3 Polyclonal Antibody

Description

Product type	Primary Antibody
Code	BT-AP08676
Host	Rabbit
Isotype	IgG
Size	20ul, 50ul, 100ul
Immunogen	The antiserum was produced against synthesized peptide derived from human ZNF280C. AA range:251-300
Mol wt	83096
Species reactivity	Human
Clonality	Polyclonal
Recommended application	WB, IHC-p, ELISA
Concentration	1 mg/ml
Full name	SUHW3 Antibody
Synonyms	ZNF280C; SUHW3; ZNF633; Zinc finger protein 280C; Suppressor of hairy wing homolog 3; Zinc finger protein 633

This product is for research use only, not for use in human, therapeutic or diagnostic procedure.

Background

ZNF280C (zinc finger protein 280C) encodes a member of the zinc finger domain-containing protein family. This family member contains multiple Cys2-His2 (C2H2)-type zinc finger domains, the most common type of zinc finger domain that self-folds to form a beta-beta-alpha structure that binds a zinc ion.

Recommended Dilution

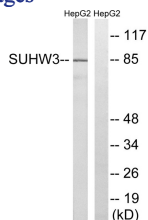
WB: 1: 500 - 1: 2000

IHC: 1: 100 - 1: 300

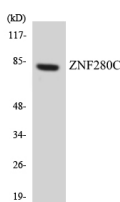
ELISA: 1: 40000

Not yet tested in other applications.

Images



Western blot analysis of lysates from HepG2 cells, using ZNF280C Antibody. The lane on the right is blocked with the synthesized peptide.



Western blot analysis of the lysates from HeLa cells using ZNF280C antibody.

Storage

-20°C for one year

501 Changsheng S Rd, Nanhu Dist, Jiaxing, Zhejiang, China

Tel: 86 21 31007137 | E-mail: save@bt-laboratory.com | www.bt-laboratory.com