

E2A(Phospho Thr355) Polyclonal Antibody

Description

Product type	Primary Antibody
Code	BT-AP08679
Host	Rabbit
Isotype	IgG
Size	20ul, 50ul, 100ul
Immunogen	The antiserum was produced against synthesized peptide derived from human E2A around the phosphorylation site of Thr355. AA range:321-370
Mol wt	67600
Species reactivity	Human, Mouse, Rat
Clonality	Polyclonal
Recommended application	IHC-p, IF, ELISA
Concentration	1 mg/ml
Full name	Transcription factor E2-alpha
Synonyms	Transcription factor E2-alpha; TCF3; BHLHB21; E2A; ITF1; Transcription factor E2-alpha; Class B basic helix-loop-helix protein 21; bHLHb21; Immunoglobulin enhancer-binding factor E12/E47; Immunoglobulin transcription factor 1; Kappa-E2-binding factor; Transcription facto

This product is for research use only, not for use in human, therapeutic or diagnostic procedure.

Background

This gene encodes a member of the E protein (class I) family of helix-loop-helix transcription factors. E proteins activate transcription by binding to regulatory E-box sequences on target genes as heterodimers or homodimers, and are inhibited by heterodimerization with inhibitor of DNA-binding (class IV) helix-loop-helix proteins. E proteins play a critical role in lymphopoiesis, and the encoded protein is required for B and T lymphocyte development. Deletion of this gene or diminished activity of the encoded protein may play a role in lymphoid malignancies. This gene is also involved in several chromosomal translocations that are associated with lymphoid malignancies including pre-B-cell acute lymphoblastic leukemia (t(1;19), with PBX1), childhood leukemia (t(19;19), with TFPT) and acute leukemia (t(12;19), with ZNF384). Alternatively spliced transcript variants encoding multiple isoforms have been

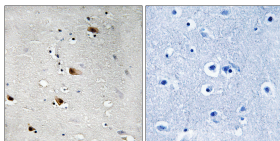
Recommended Dilution

IHC-p: 1: 100 - 1: 300

ELISA: 1: 5000

Not yet tested in other applications.

Images



Immunohistochemistry analysis of paraffin-embedded human brain, using E2A (Phospho-Thr355) Antibody. The picture on the right is blocked with the phospho peptide.

Storage

-20°C for 1 year